

## Site:

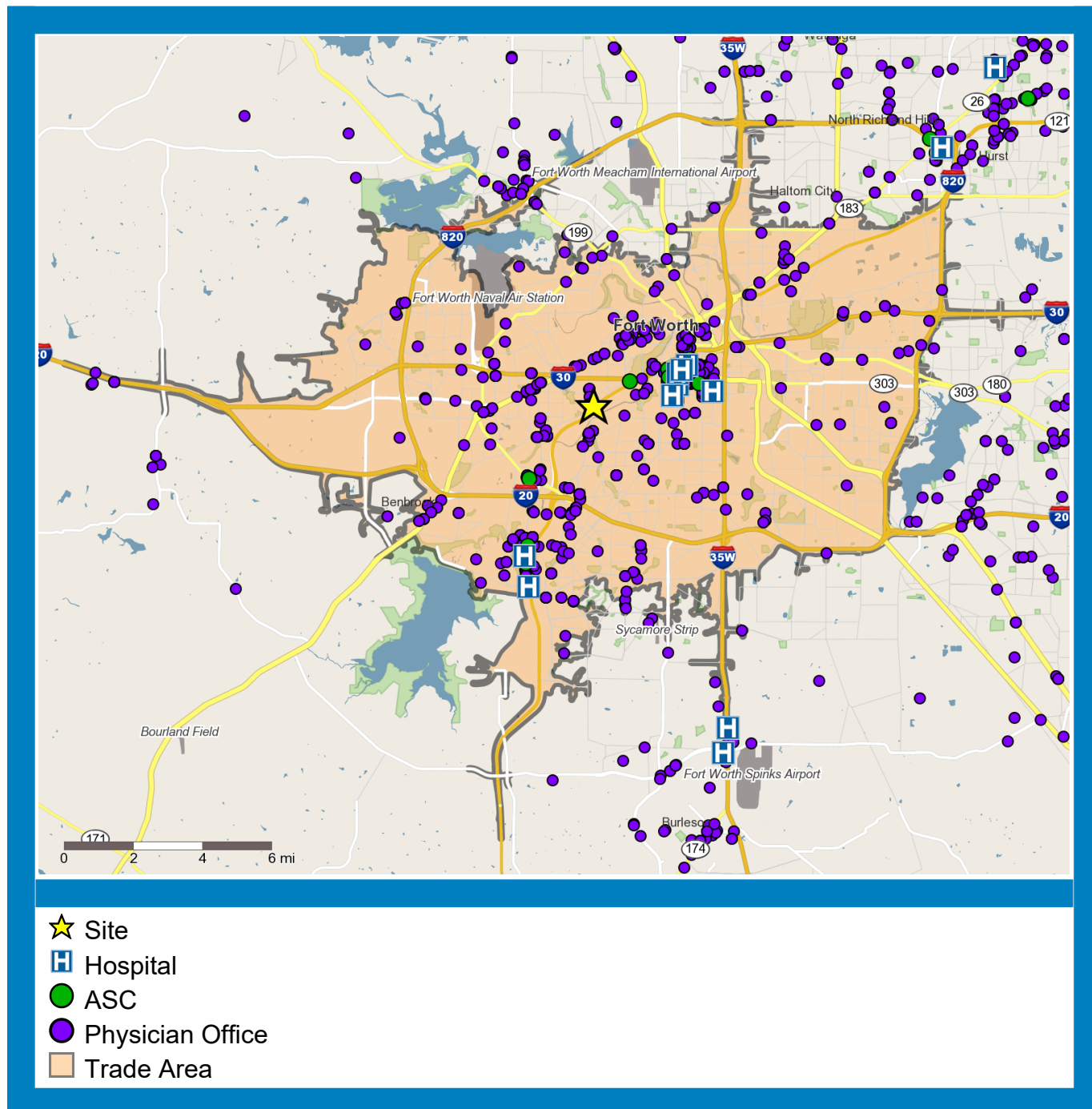
THC Sample

## Trade Area:

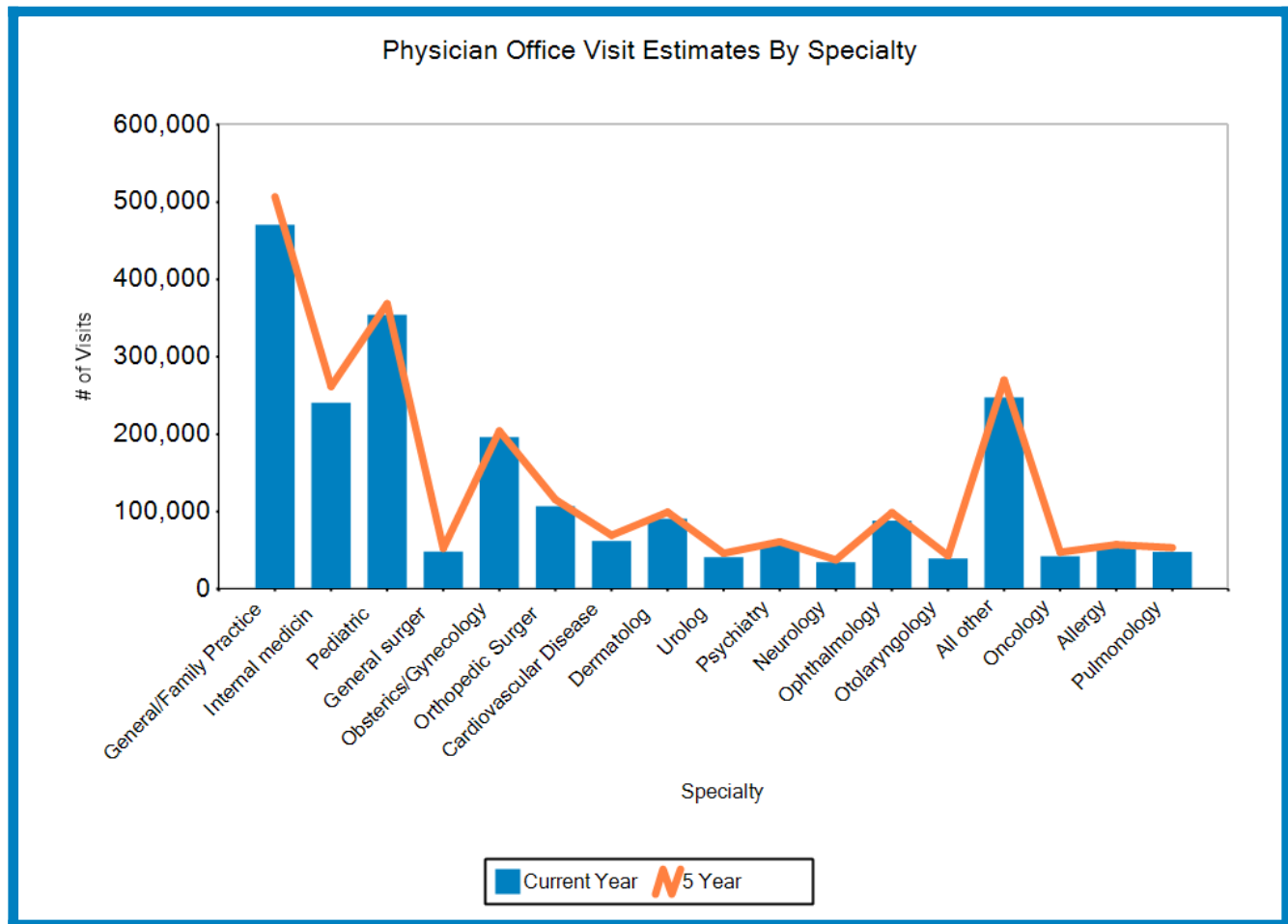
15 Minute Drive Time

	Current Year	5 Year Projected
Households	189,361	195,763
Population	504,264	510,730
Est Physician Office Visits	2,222,676	2,392,997
Physicians	2,582	
ASC	10	
Hospitals	9	

## Healthcare Facilities



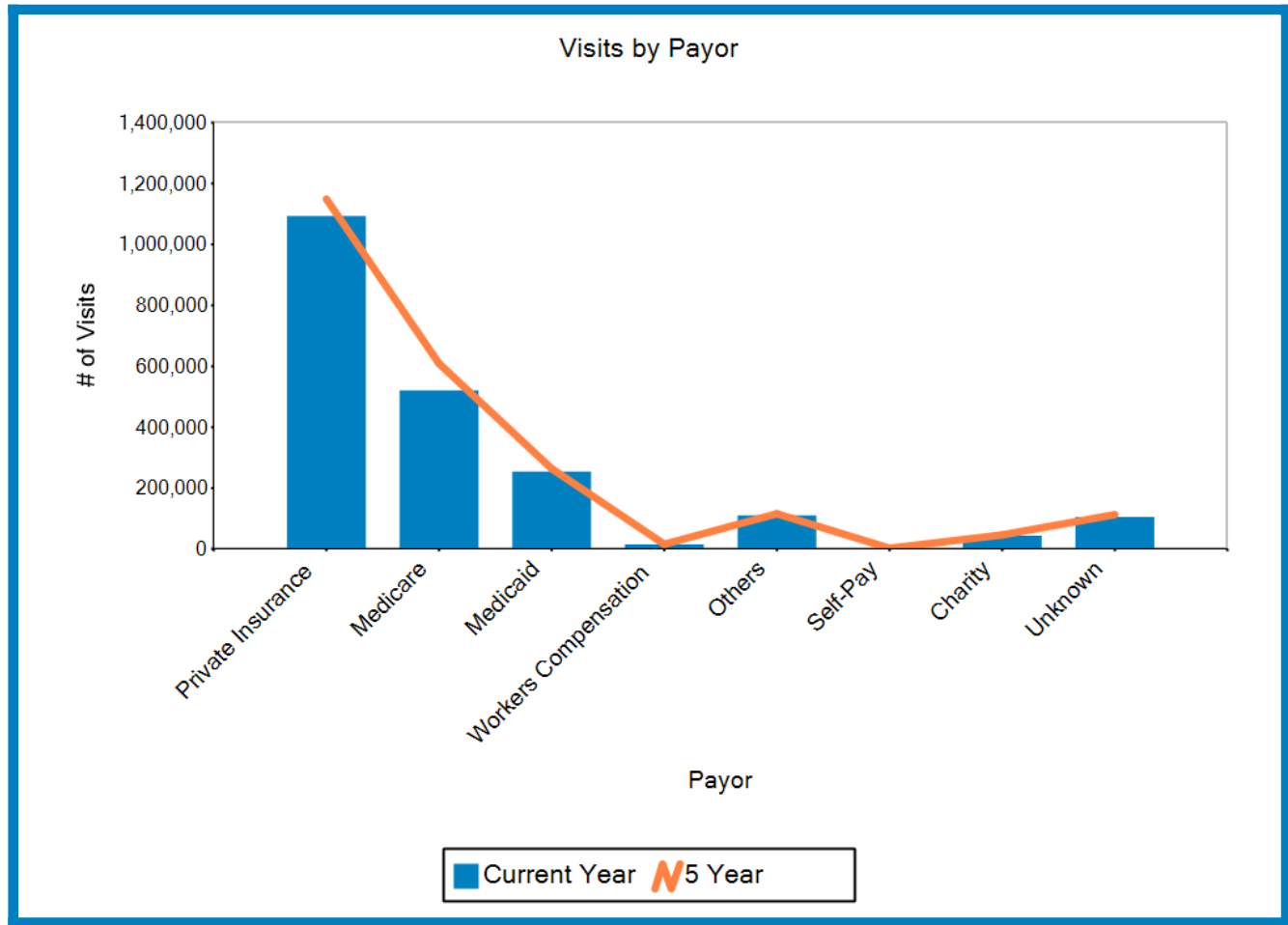
Source: CDC National Ambulatory Medical Care Survey (NAMCS). 2018 Centers for Medicare & Medicaid Services (CMS)



### Physician Office Visit Estimates By Specialty

Specialty	Current Year	5 Year
General/Family Practice	470,701	506,872
Internal medicine	240,734	261,879
Pediatrics	354,414	368,756
General surgery	48,311	52,471
Obsterics/Gynecology	196,178	204,224
Orthopedic Surgery	106,898	115,548
Cardiovascular Disease	61,906	69,397
Dermatology	90,889	99,304
Urology	40,888	46,119
Psychiatry	57,301	61,038
Neurology	34,367	37,597
Ophthalmology	88,465	98,765
Otolaryngology	39,494	42,957
All other	247,660	270,023
Oncology	42,113	47,476
Allergy	54,400	57,291
Pulmonology	47,959	53,281

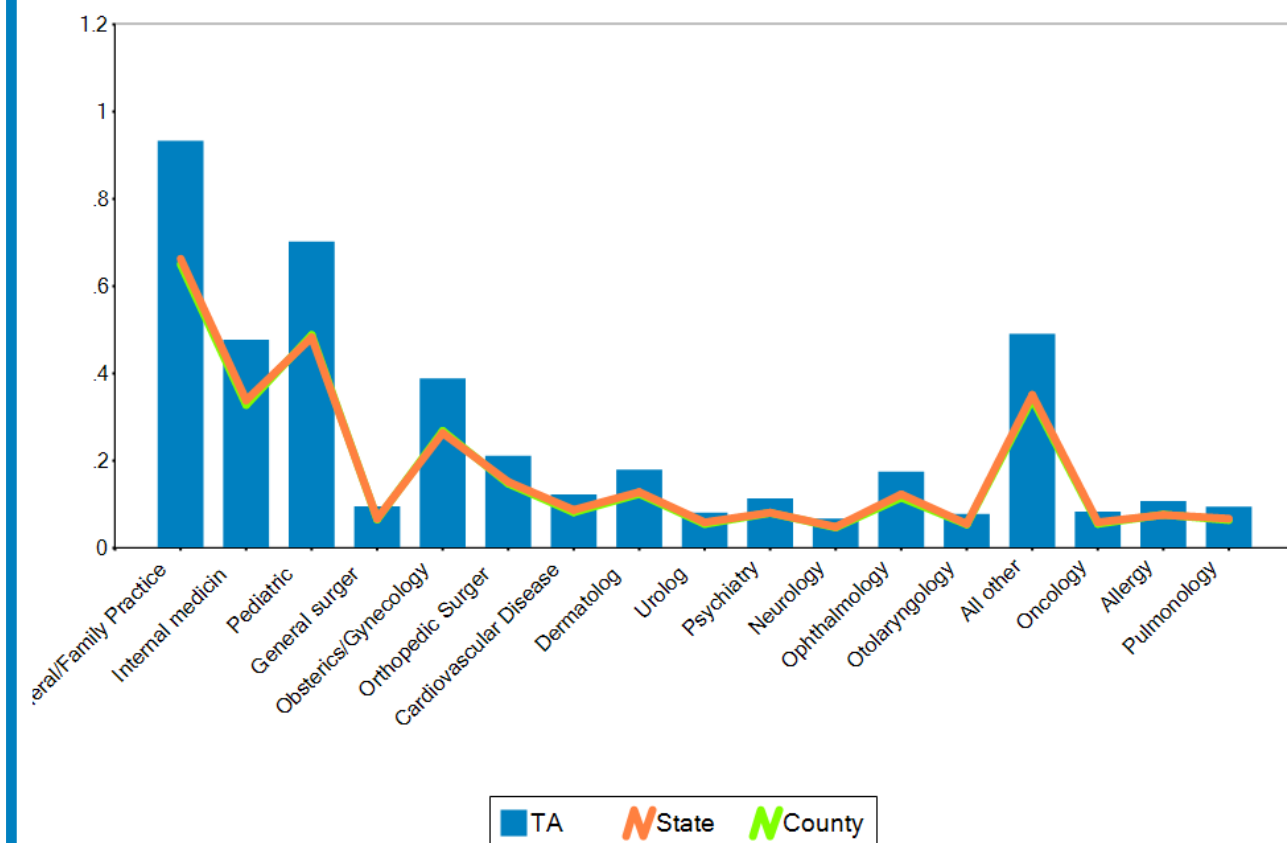
Source: CDC National Ambulatory Medical Care Survey (NAMCS). 2018 Centers for Medicare & Medicaid Services (CMS)



### Visits by Payor

Payor	Current Year	5 Year
Private Insurance	1,093,661	1,149,337
Medicare	520,927	608,884
Medicaid	253,787	263,691
Workers Compensation	14,745	15,478
Others	109,971	115,678
Self-Pay	2,399	2,460
Charity	43,562	46,128
Unknown	105,310	112,857

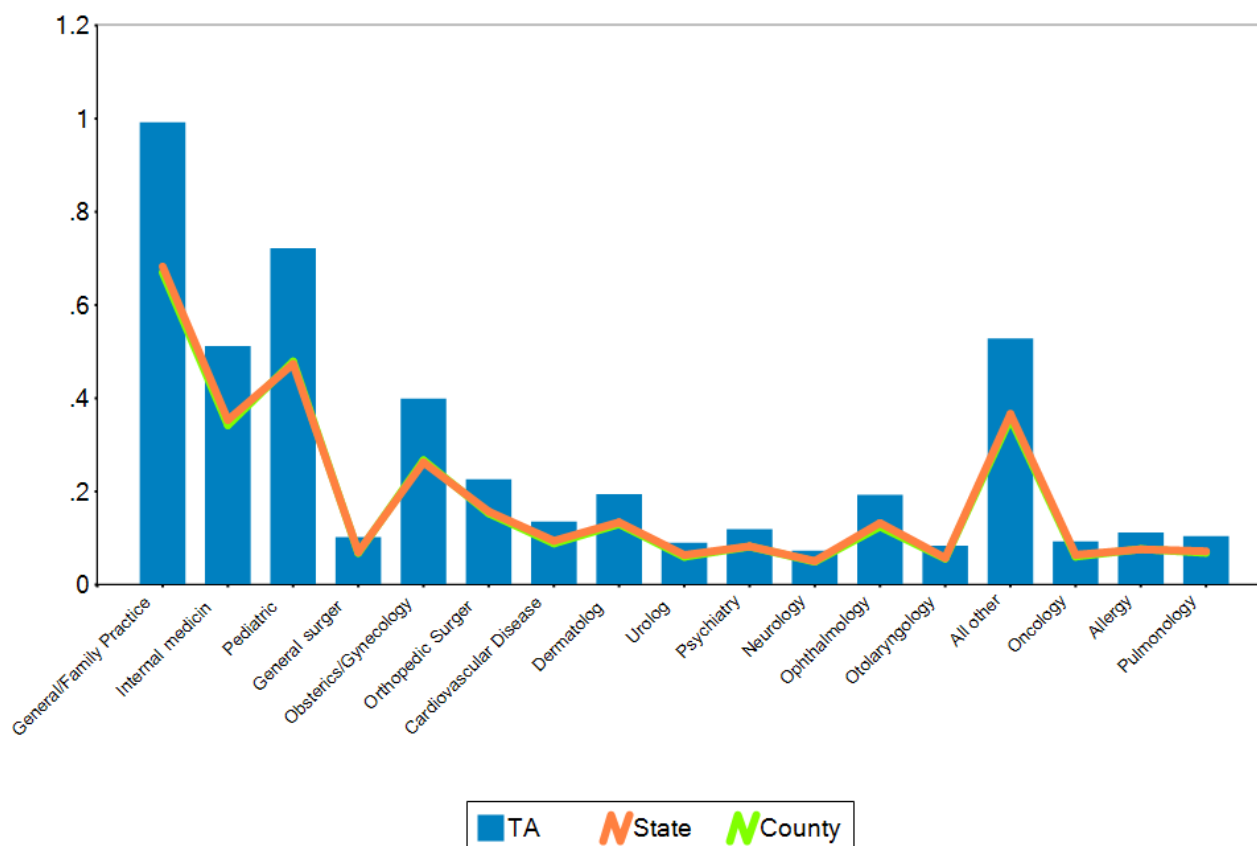
Current Year Physician Office Visits Per Person



Specialty	TA Current Yr	County Current Yr	State Current Yr
General/Family Practice	0.93	0.65	0.66
Internal medicine	0.48	0.33	0.34
Pediatrics	0.70	0.49	0.48
General surgery	0.10	0.07	0.07
Obstetrics/Gynecology	0.39	0.27	0.26
Orthopedic Surgery	0.21	0.15	0.15
Cardiovascular Disease	0.12	0.08	0.09
Dermatology	0.18	0.12	0.13
Urology	0.08	0.06	0.06
Psychiatry	0.11	0.08	0.08
Neurology	0.07	0.05	0.05
Ophthalmology	0.18	0.12	0.12
Otolaryngology	0.08	0.05	0.06
All other	0.49	0.34	0.35
Oncology	0.08	0.06	0.06
Allergy	0.11	0.08	0.08
Pulmonology	0.10	0.06	0.07

Source: CDC National Ambulatory Medical Care Survey (NAMCS). 2018 Centers for Medicare & Medicaid Services (CMS)

Project 5 Year Physician Office Visits Per Person



Specialty	TA Projected 5 Yr	County Projected 5 Yr	State Projected 5 Yr
General/Family Practice	0.99	0.67	0.68
Internal medicine	0.51	0.34	0.35
Pediatrics	0.72	0.48	0.47
General surgery	0.10	0.07	0.07
Obsterics/Gynecology	0.40	0.27	0.26
Orthopedic Surgery	0.23	0.15	0.16
Cardiovascular Disease	0.14	0.09	0.09
Dermatology	0.19	0.13	0.13
Urology	0.09	0.06	0.06
Psychiatry	0.12	0.08	0.08
Neurology	0.07	0.05	0.05
Ophthalmology	0.19	0.12	0.13
Otolaryngology	0.08	0.06	0.06
All other	0.53	0.36	0.37
Oncology	0.09	0.06	0.06
Allergy	0.11	0.08	0.08
Pulmonology	0.10	0.07	0.07

Source: CDC National Ambulatory Medical Care Survey (NAMCS). 2018 Centers for Medicare & Medicaid Services (CMS)

Medical Facilities	0-1 Mile	2-3 Miles	4-5 Miles	6-10 Miles	11-15 Miles
Physicians	39	1362	956	145	80
Hospital	0	6	1	2	0
ASC	0	5	5	0	0

### Count of Physicians by Specialty – in Trade Area

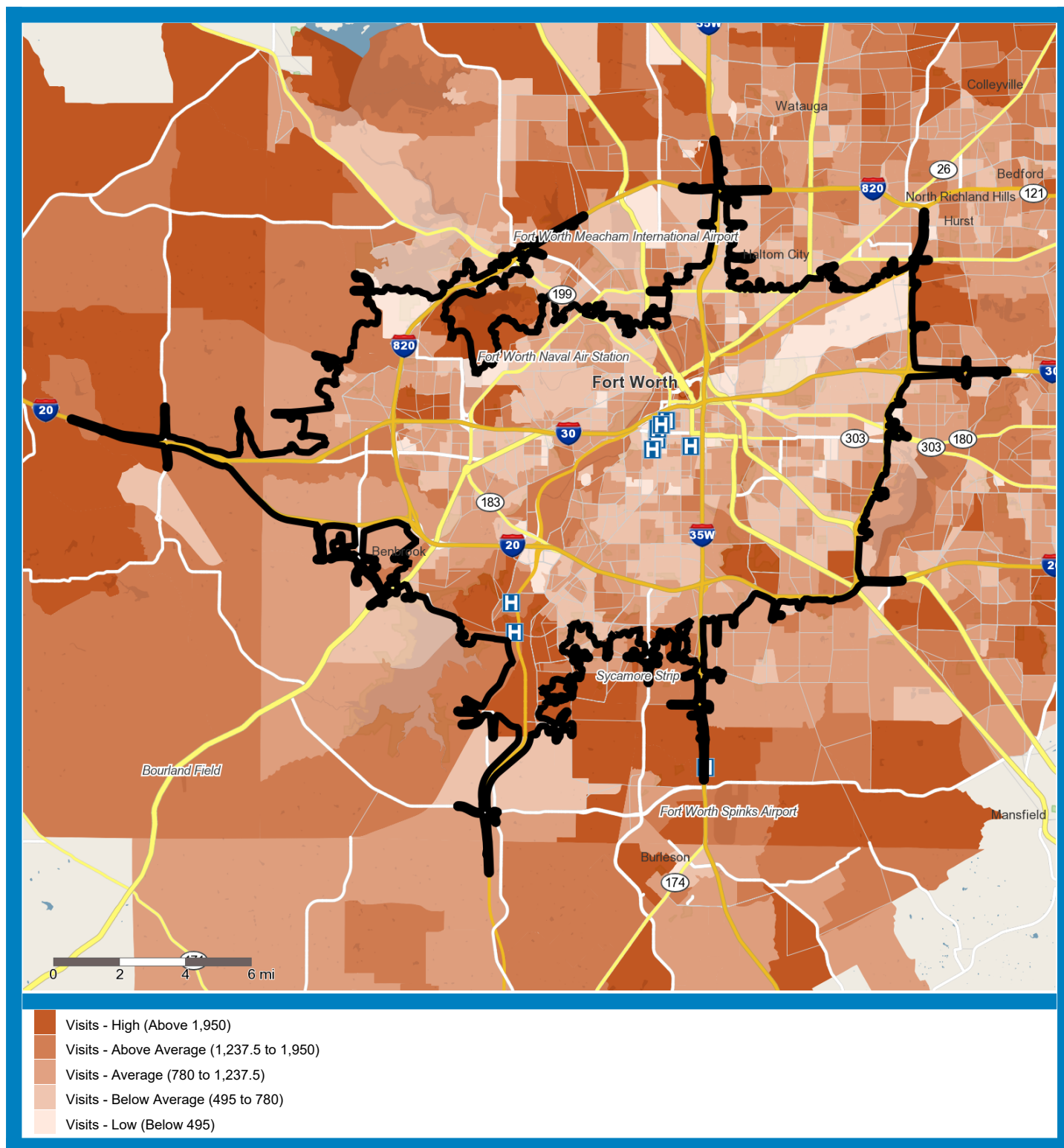
Specialty	Count
NURSE PRACTITIONER	260
INTERNAL MEDICINE	237
FAMILY PRACTICE	234
PHYSICIAN ASSISTANT	182
CERTIFIED REGISTERED NURSE ANESTHETIST	177
DIAGNOSTIC RADIOLOGY	149
OBSTETRICS/GYNECOLOGY	105
ANESTHESIOLOGY	74
ORTHOPEDIC SURGERY	67
GENERAL SURGERY	62
PSYCHIATRY	54
OPTOMETRY	48
CARDIOVASCULAR DISEASE (CARDIOLOGY)	47
GASTROENTEROLOGY	46
NEPHROLOGY	45
OPHTHALMOLOGY	44
PHYSICAL THERAPY	40
CHIROPRACTIC	36
PEDIATRIC MEDICINE	36
NEUROLOGY	35
CLINICAL SOCIAL WORKER	31
CLINICAL PSYCHOLOGIST	30
DERMATOLOGY	29
EMERGENCY MEDICINE	29
PULMONARY DISEASE	29
PATHOLOGY	28
PHYSICAL MEDICINE AND REHABILITATION	27
HEMATOLOGY/ONCOLOGY	26
ENDOCRINOLOGY	25
INFECTIOUS DISEASE	24
PODIATRY	23
NEUROSURGERY	22
OTOLARYNGOLOGY	21
UROLOGY	21

Source: CDC National Ambulatory Medical Care Survey (NAMCS). 2018 Centers for Medicare & Medicaid Services (CMS)

Specialty	Count
CRITICAL CARE (INTENSIVISTS)	16
AUDIOLOGIST	15
INTERVENTIONAL CARDIOLOGY	15
PLASTIC AND RECONSTRUCTIVE SURGERY	15
HOSPITALIST	13
MEDICAL ONCOLOGY	13
RHEUMATOLOGY	10
VASCULAR SURGERY	9
ALLERGY/IMMUNOLOGY	8
CARDIAC ELECTROPHYSIOLOGY	8
RADIATION ONCOLOGY	8
THORACIC SURGERY	8
CERTIFIED NURSE MIDWIFE	7
GERIATRIC MEDICINE	7
SURGICAL ONCOLOGY	7
HAND SURGERY	6
INTERVENTIONAL RADIOLOGY	6
MAXILLOFACIAL SURGERY	6
PAIN MANAGEMENT	6
COLORECTAL SURGERY (PROCTOLOGY)	5
GENERAL PRACTICE	5
INTERVENTIONAL PAIN MANAGEMENT	5
SPORTS MEDICINE	5
CLINICAL NURSE SPECIALIST	4
GYNECOLOGICAL ONCOLOGY	4
OSTEOPATHIC MANIPULATIVE MEDICINE	4
SPEECH LANGUAGE PATHOLOGIST	4
CARDIAC SURGERY	3
OCCUPATIONAL THERAPY	3
REGISTERED DIETITIAN OR NUTRITION PROFESSIONAL	3
HEMATOLOGY	2
HOSPICE/PALLIATIVE CARE	2
NUCLEAR MEDICINE	2
ORAL SURGERY	2
HEMATOPOIETIC CELL TRANSPLANTATION AND CELLULAR TH	1
PREVENTATIVE MEDICINE	1
SLEEP MEDICINE	1

Source: CDC National Ambulatory Medical Care Survey (NAMCS). 2018 Centers for Medicare & Medicaid Services (CMS)

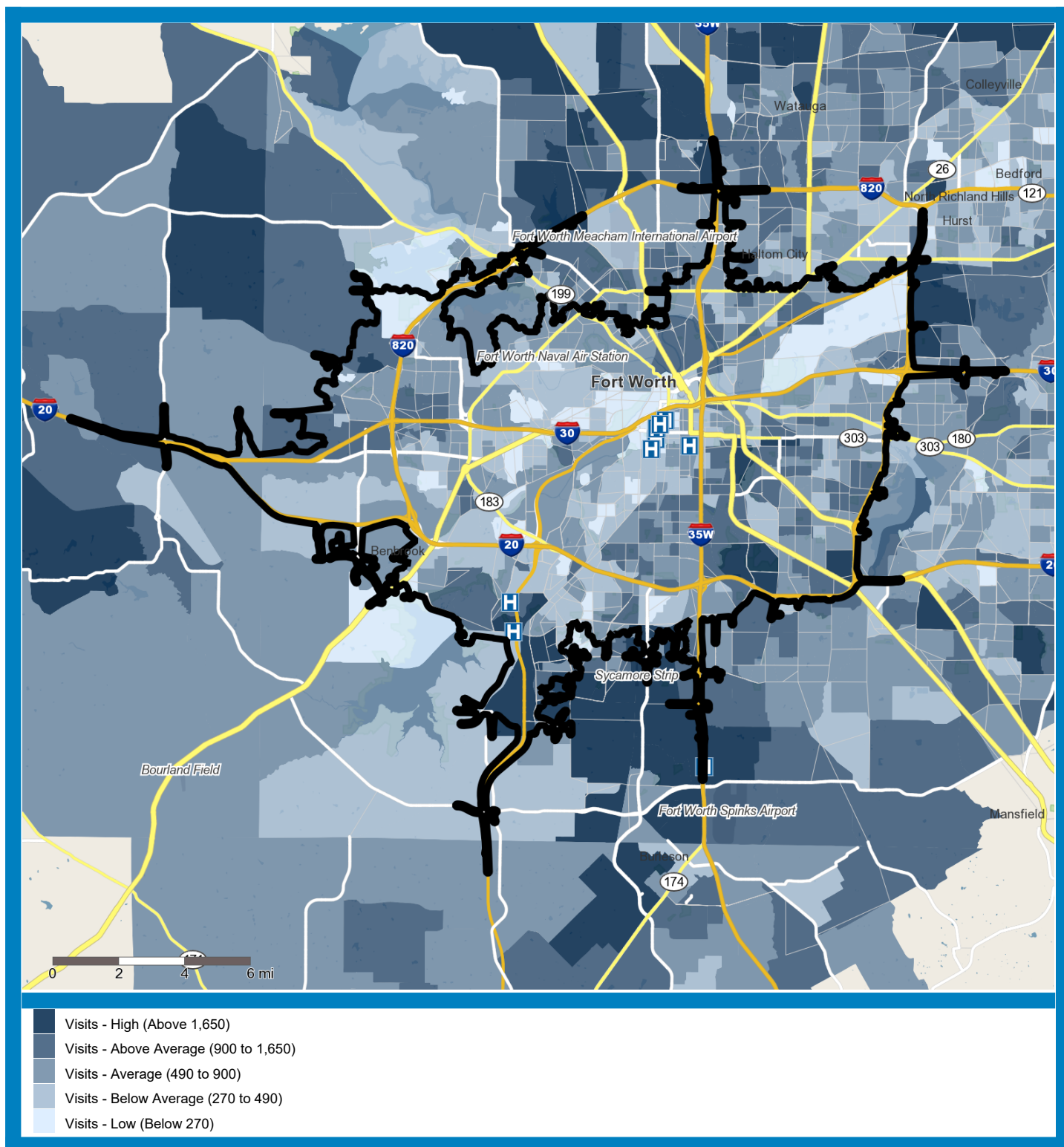
## Demand for General and Family Practice Visits by Block Group



Source: CDC National Ambulatory Medical Care Survey (NAMCS). 2018 Centers for Medicare & Medicaid Services (CMS)

## Demand for Pediatrics

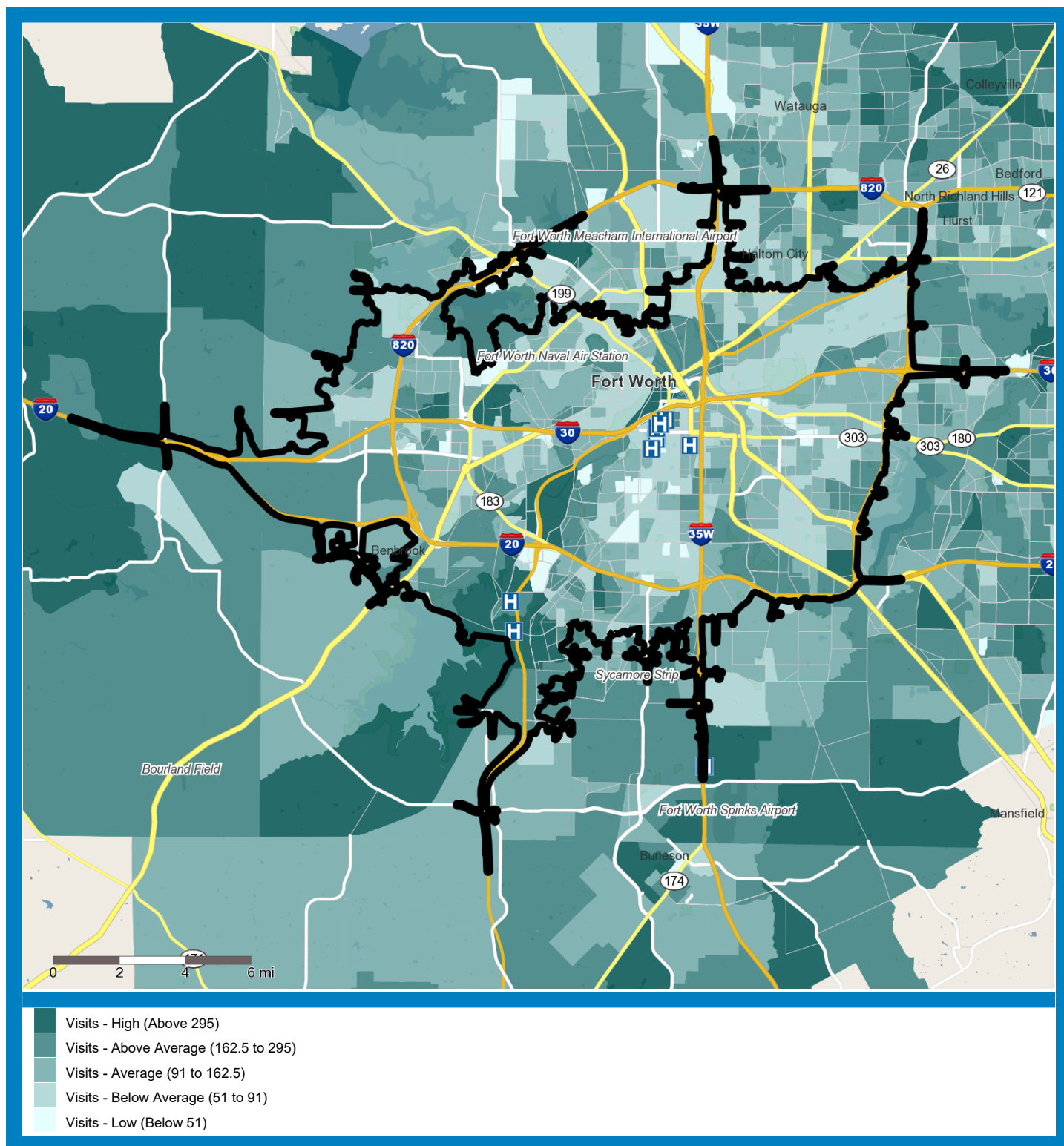
### Visits by Block Group



Source: CDC National Ambulatory Medical Care Survey (NAMCS). 2018 Centers for Medicare & Medicaid Services (CMS)

## Demand for Cardiovascular Diseases

### Visits by Block Group



Source: CDC National Ambulatory Medical Care Survey (NAMCS). 2018 Centers for Medicare & Medicaid Services (CMS)