

Site:

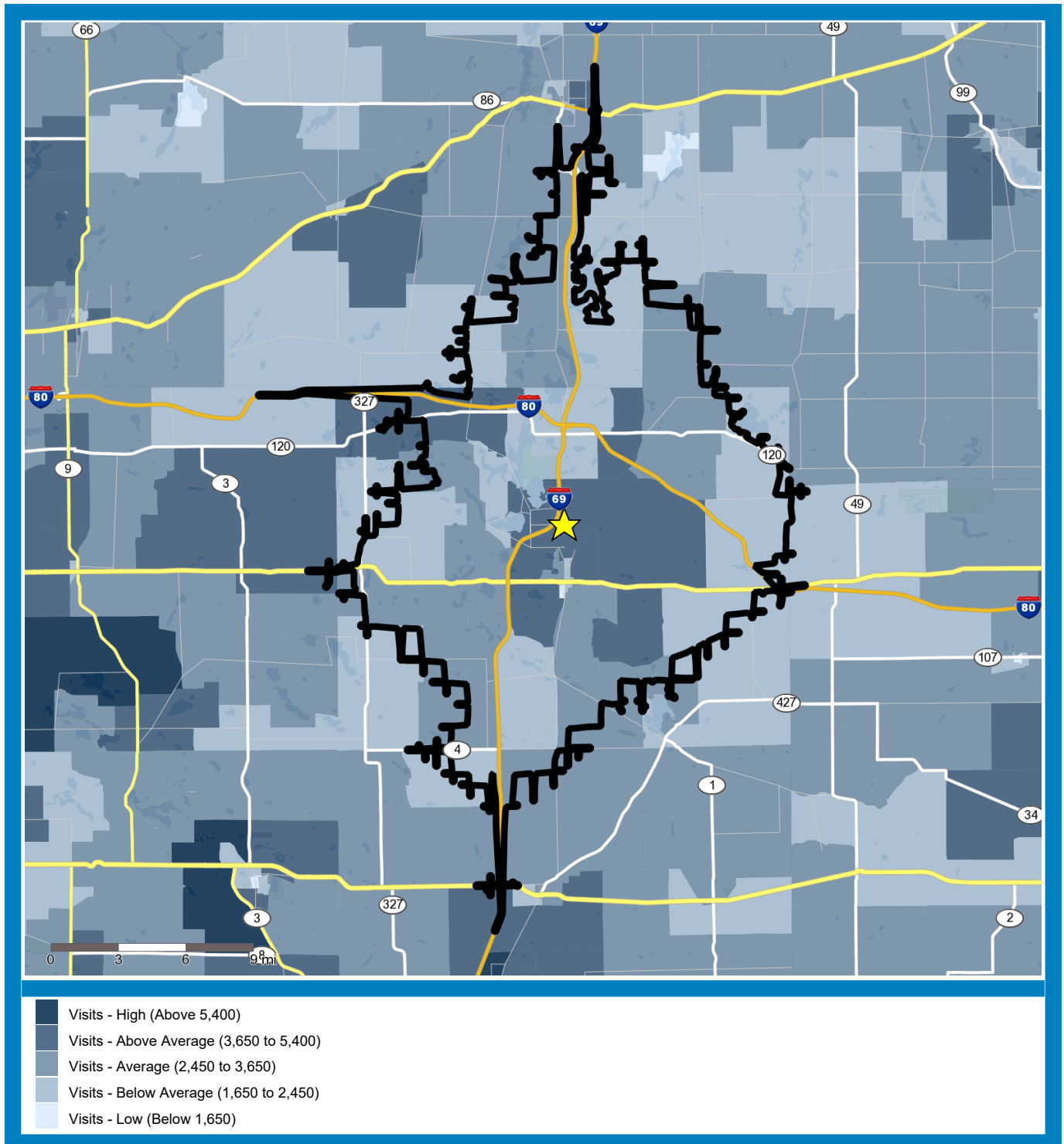
Service Line Test

	Current Year	5 Year Projected
Households	12,333	12,767
Population	31,550	32,333
Est Physician Office Visits	145,550	152,110

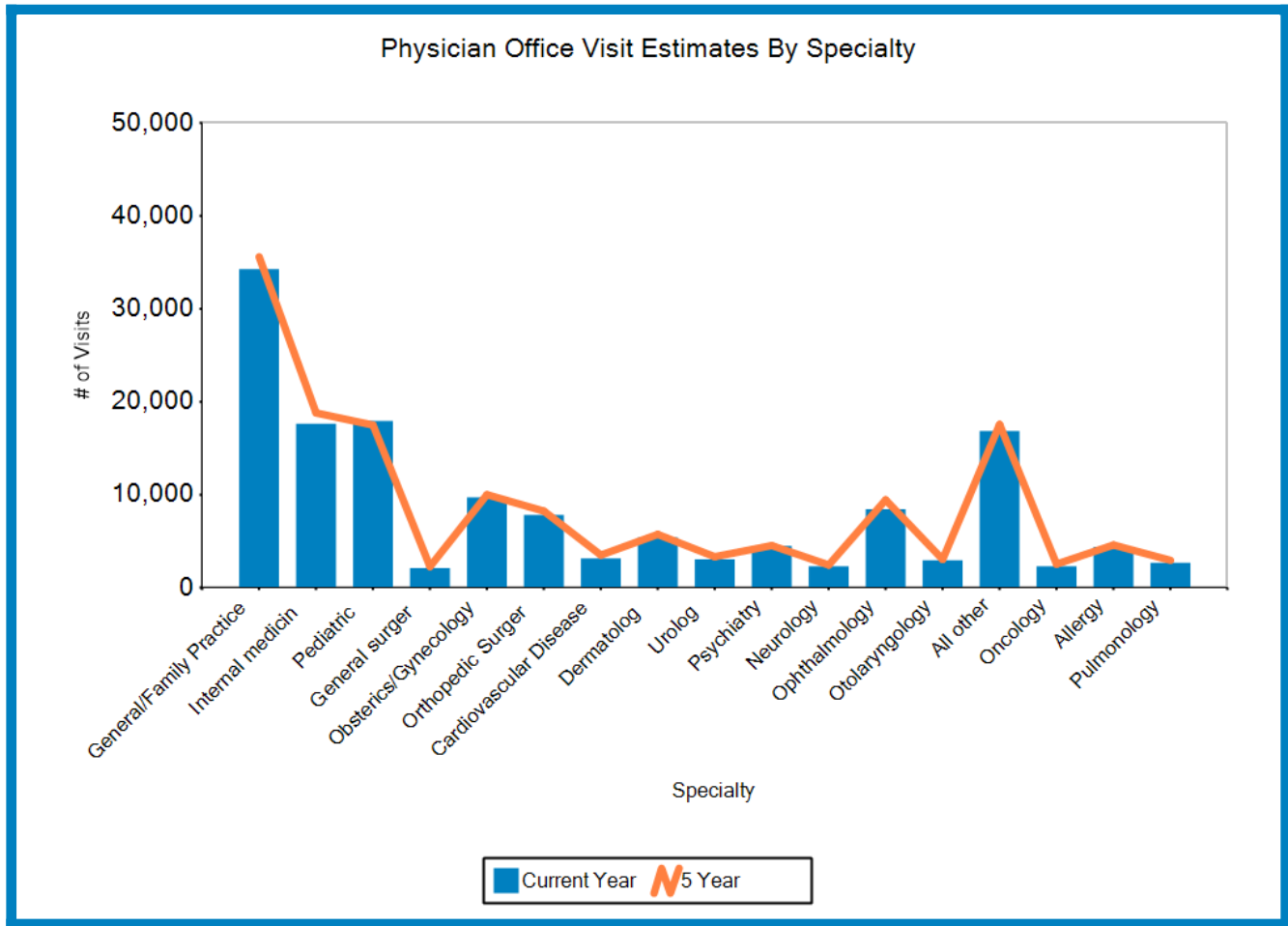
Trade Area:

15 Minute Drive Time

Total Physician Office Visits



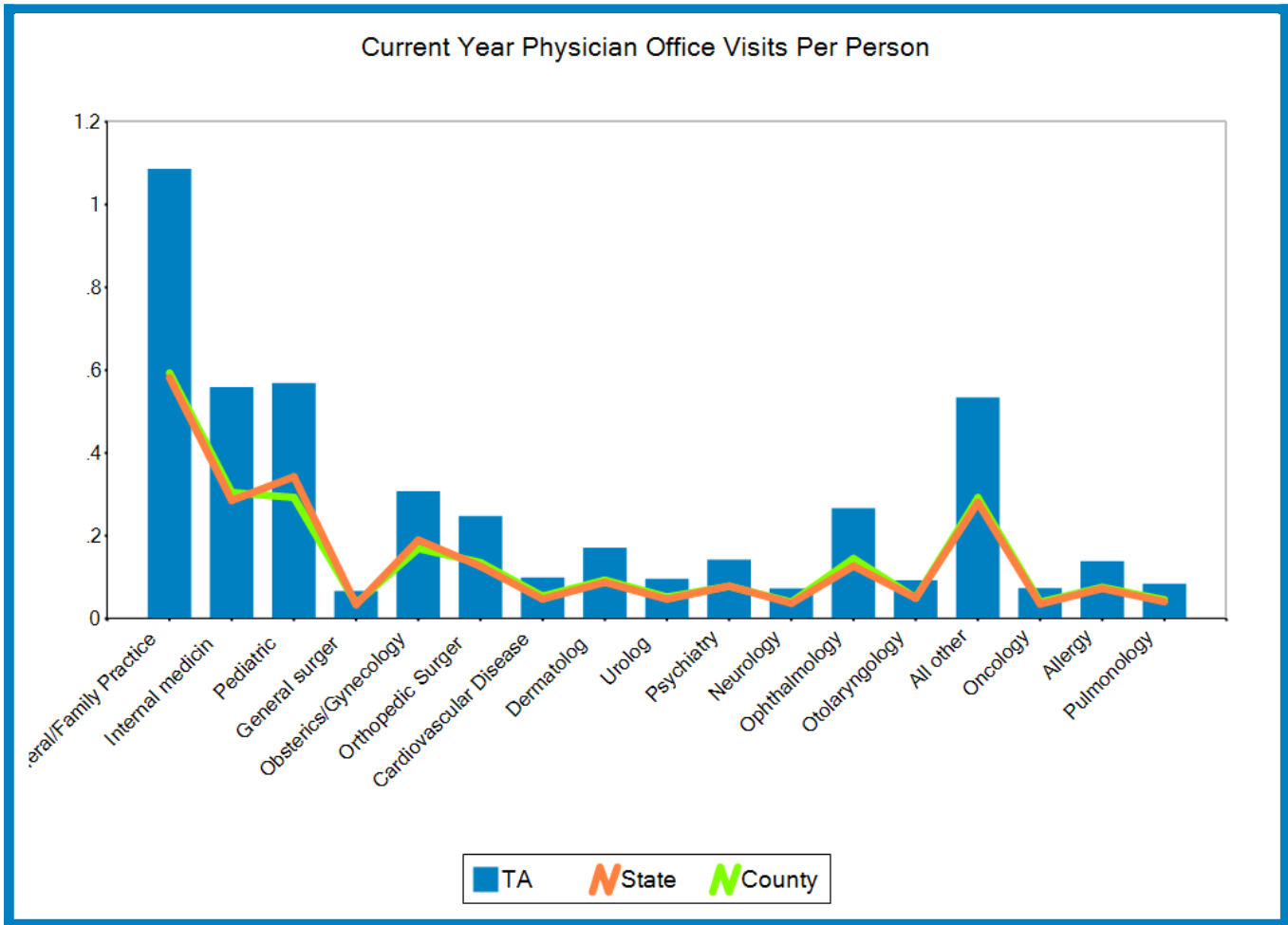
Source: CDC National Ambulatory Medical Care Survey (NAMCS), 2018 Centers for Medicare & Medicaid Services (CMS)



Physician Office Visit Estimates By Specialty

Specialty	Current Year	5 Year
General/Family Practice	34,292	35,601
Internal medicine	17,639	18,806
Pediatrics	17,957	17,498
General surgery	2,120	2,272
Obsterics/Gynecology	9,712	10,010
Orthopedic Surgery	7,829	8,243
Cardiovascular Disease	3,152	3,508
Dermatology	5,402	5,737
Urology	3,044	3,329
Psychiatry	4,496	4,535
Neurology	2,309	2,441
Ophthalmology	8,436	9,447
Otolaryngology	2,939	3,043
All other	16,852	17,563
Oncology	2,323	2,533
Allergy	4,382	4,599
Pulmonology	2,665	2,943

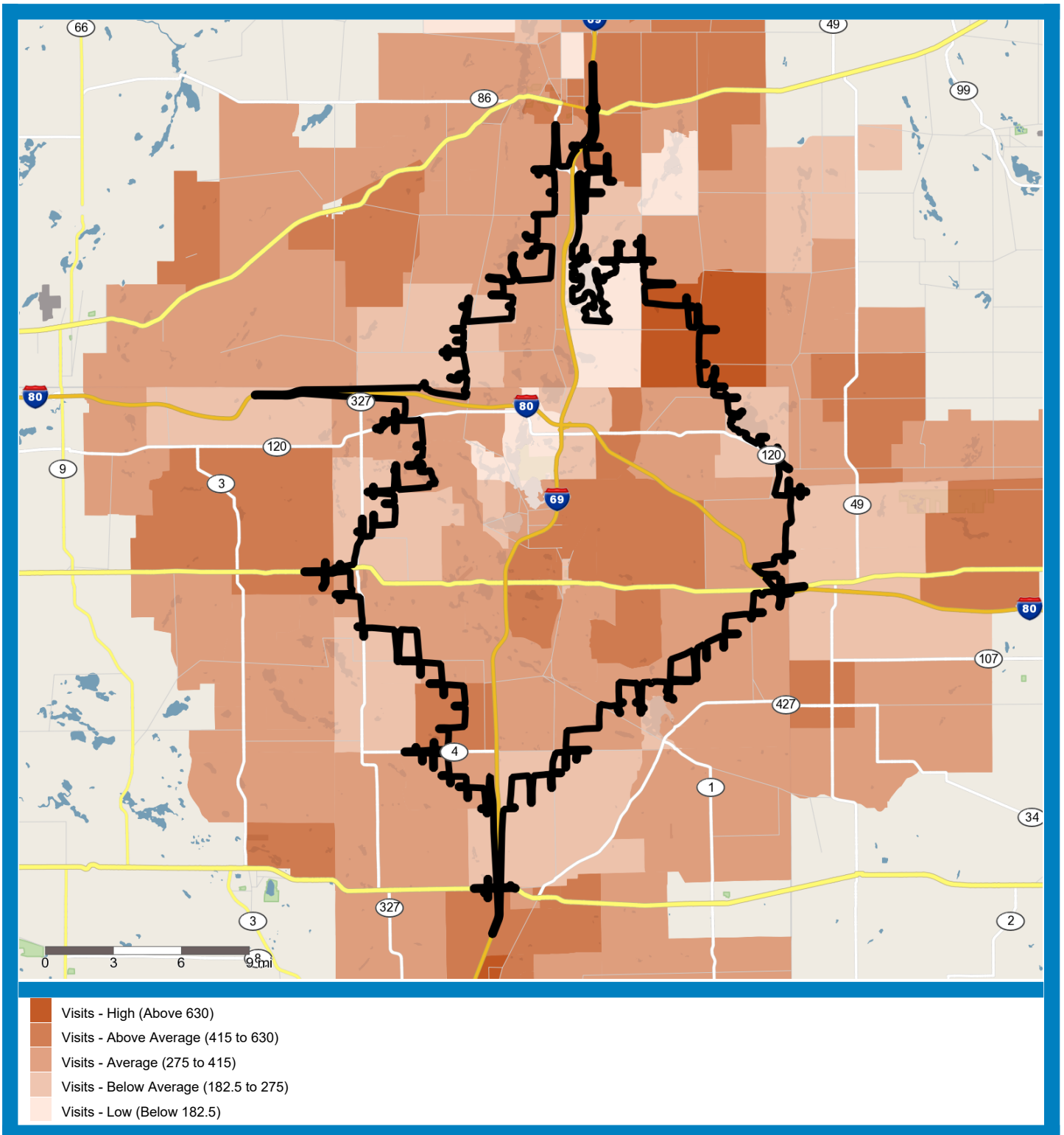
Source: CDC National Ambulatory Medical Care Survey (NAMCS). 2018 Centers for Medicare & Medicaid Services (CMS)



Specialty	TA Current Yr	County Current Yr	State Current Yr
General/Family Practice	1.09	0.59	0.58
Internal medicine	0.56	0.30	0.29
Pediatrics	0.57	0.29	0.34
General surgery	0.07	0.04	0.03
Obsterics/Gynecology	0.31	0.17	0.19
Orthopedic Surgery	0.25	0.14	0.13
Cardiovascular Disease	0.10	0.05	0.05
Dermatology	0.17	0.09	0.09
Urology	0.10	0.05	0.05
Psychiatry	0.14	0.08	0.08
Neurology	0.07	0.04	0.04
Ophthalmology	0.27	0.15	0.13
Otolaryngology	0.09	0.05	0.05
All other	0.53	0.29	0.28
Oncology	0.07	0.04	0.04
Allergy	0.14	0.08	0.07
Pulmonology	0.08	0.05	0.04

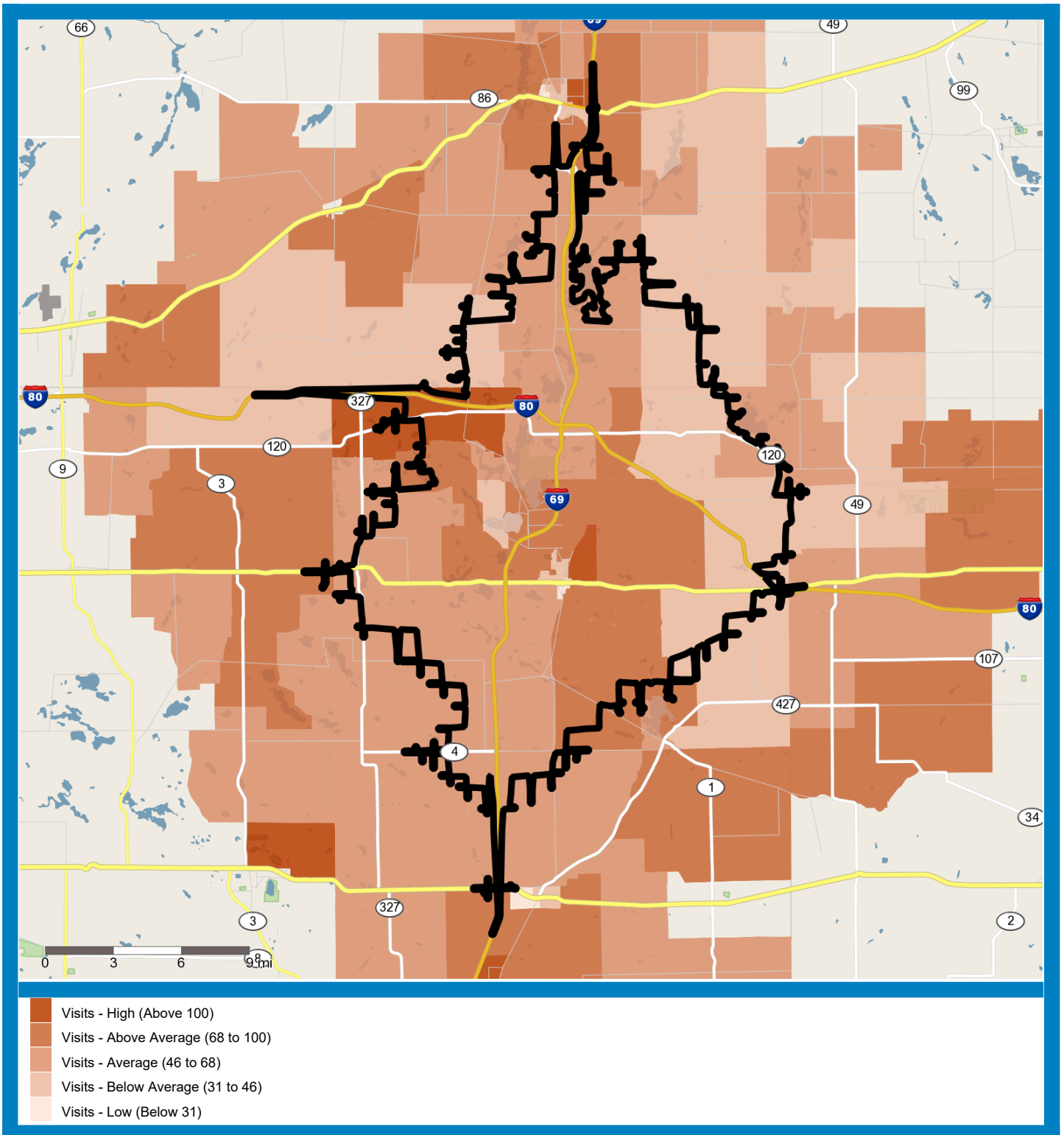
Source: CDC National Ambulatory Medical Care Survey (NAMCS). 2018 Centers for Medicare & Medicaid Services (CMS)

Demand for Pediatrics Visits by Block Group



Source: CDC National Ambulatory Medical Care Survey (NAMCS), 2018 Centers for Medicare & Medicaid Services (CMS)

Demand for Cardiovascular Disease Visits by Block Group



Source: CDC National Ambulatory Medical Care Survey (NAMCS), 2018 Centers for Medicare & Medicaid Services (CMS)